



History of the Maple Syrup Festival



Established in 1967, the Delta Maple Syrup Festival was the first maple celebration to be established in the area. In planning for Canada's Centennial, a small group of dedicated volunteers met regularly in the Council Chambers at the Old Town Hall. As President of the group, Harold Russell worked tirelessly as he contacted every farmer, arranged for sugar shack visits and tours, promoted sugaring off demonstrations and jack wax parties.

Other members of the community who were heavily involved with the planning included Arch Ostrom, Sally Halladay, Ron Morris, Lloyd Sawyer, Howard Jones, Sid Talbot, Glen & Irma Chant. There was little advertising required for the event but huge crowds came from far and near.

In the beginning, the Festival was a three-day event held in March which included feeding pancakes and syrup to busloads of students on school trips. In order to keep up with the crowds, meals were served on both floors of the Old Town Hall. Visitors were able to tour local sugar bushes along with watching maple syrup being bottled and maple candy being made in the Confederated Foods Syrup Plant building.

Over the years, the Festival continued through the efforts of many local residents and Service Clubs before becoming a project for the Directors of the Delta Agricultural Society.

And now, the tradition continues 51 years later!

Interested in Volunteering?

Table Servers / Cleaners can contact Heather Halladay
Phone: 613-928-2995

Cooks / Kitchen Support can contact Melinda Cowan
Phone: 613-924-1849

Points of Interest

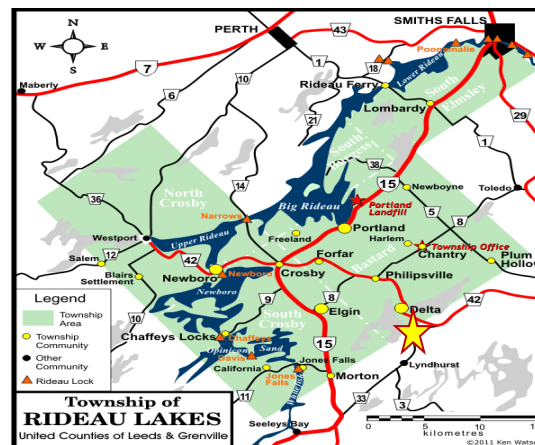
- ❖ **Delta Fair**
188th Anniversary
July 26th to July 29th
Website: www.deltafair.com
Contact: 613-928-2800



- ❖ **Old Stone Mill**
National Historic Site
Open from
Victoria Day Weekend to
Labour Day Weekend
Harvest Festival
September 29th
Website: www.deltamill.org
Contact: 613-928-2584



- ❖ **Lower Beverley Lake Park**
Open from
Mother's Day Weekend to
Thanksgiving Weekend
Celebrating the Season
New Dates in 2018!
Friday and Saturday evenings
Nov 30th to Dec 22nd / 5:00 p.m. to 8:30 p.m.
Website: www.beverlylakepark.com
Contact: 613-928-2881



51st Annual

Delta Maple Syrup Festival 2018

Saturday, April 21st
&
Sunday, April 22nd

9 a.m. to 3 p.m.
~Both Days~

A Community Event
sponsored by the
Delta Agricultural Society



For more information,
Visit www.deltafair.com
Call 613-928-2800 / Email deltafair@ripnet.com





Festival Events

Craft Sale/Flea Market

Upper level of the Fair Exhibit Hall (both days)

Local Syrup Producers

Local Syrup Producers will be selling maple produce at the Fair Grounds (both days)

Fun for Kids at the Fair Grounds

Bouncy Maze-Mini Putt-Face Painting (both days)
Sponsored by
Lyndhurst Home Building Centre



Rynestone-Magic with an Edge
Sunday at 11:30 a.m.

Children's "Big Truck" Experience

Come and See your Favourite "Big Truck"
Saturday from 11:00 a.m. to 1:00 p.m.

Brockville Speedway Race Car Display

Sunday from 11:00 a.m. to 1:00 p.m.

KOPTERS Helicopter Rides

From the Fairgrounds on Saturday
Starting at 10 a.m. - \$50 per person



Wagon Rides (weather permitting)

From Fair Grounds to Lower Beverley Lake Park

Old Stone Mill

Open for tours during both days of the Festival
Blacksmithing and Milling Demonstrations

Old Town Hall

Used Book Sale (both days)
Refreshments available
Public Washrooms onsite

Athletic & Recreation Centre

Ball Hockey Tournament on Saturday
9:00 a.m. to 4:00 p.m.
Contact Brandon at 613-929-4699 to register

Fire Hall Museum

Stop in for a visit and see Delta's 1st Fire Truck

Dance at the Legion Hall

8:00 p.m./ \$5.00 per person
Music by DJ 'Brother Juke Box'



Festival Events

Come & Enjoy All You Can Eat Pancakes



Flooded with Fresh Maple Syrup

First order served with Sausages
\$1.00 for each additional sausage

in the

Fair Exhibit Hall

at the

Delta Fair Grounds
110 Millcreek Drive

Cost

11 Years of Age and Over: \$10.00

Under 11 years of Age: \$5.00

(Note: HST included in price)



Willard's Baked Goods

On the way to have your pancakes,
Visit 117 Mill Creek Drive for some
donuts, cookies and butter tarts!

Specials Thanks
to



Maple Syrup Producers



Antoine's Maple Syrup

342 Lyndhurst Road, Lyndhurst
613-928-2473 / mkantoine01@yahoo.ca

Curtis Valey Farms, Ernie Curtis

711 Daytown Road, Delta
613-928-2964 / Ernest.curtis@sympatico.ca

Findlay Farms, Darrell & Rosanne Findlay

3712-B Townline Road, Toledo
613-275-4125 / cleaner.66@hotmail.com

Gibbons Maple Sugar House

41 Leacock Road, Frankville
613-275-2893 / 1-877-440-7887 / www.gibbonsmaple.com

Green Lake Maple, Andreas & Lesley Baumann

403 Lower Oak Leaf Road, Athens
613-349-2876
Andreas.Baumann.pp@gmail.com

Gunnebrooke Farms Limited, the Gunnewiek Family

206 County Road 8, Elgin
613-359-5071 / gunfarm@rideau.net

Halladay Maple, Darrell Halladay

R.R. # 4, North Augusta
613-924-1320 / halladaymaple@gmail.com

Leggett's Maple Syrup, Bruce and Kathy Leggett

637B Crosby Road, Crosby
613-246-6542 / www.leggettmaplesyrup.com

Mensen Farm, Gary and Susie Mensen

161 County Road 42, Delta
613-928-2555 / gmensen@sympatico.ca

Quabbin Hill Maple, Greg and Linda Halladay

156 Quabbin Hill Rd., Mallorytown
613-659-3227 / quabbin@1000island.net

Sugar Maple Farms, the Chant Family

3189 Thousand Acre Road, Portland
613-272-2616

Vali Rill Farm, Scott Pattermore

650 Lake Street, Plum Hollow
613-924-1905